

RESIN MATERIAL

Collections vol.28 for Japan



3form

2	Introduction Full Circle Sustainable Design
8	Project Gallery
16	Materials Varia Chroma
52	Color Portfolio
58	Whites, Diffusions, Effects and Finishes
64	製品規格

At 3form[®], we believe in meaningful design. Our approach promotes craftsmanship, community, and sustainability, while respecting the environments where we work and live. Our portfolio of products ranges from simple materials to sophisticated solutions.





Full Circle

A Better Way

Our Full Circle® program combines contemporary design and technological innovation with handmade craft to create beautiful products for architectural spaces.

フルサークル

～より良い道～

私たちは、フルサークルプログラムを行っています。発展途上国の人々に安定した仕事を提供し、衰退した地場産業復活、地域の発展に貢献する為、ネパールやセネガルなどの職人と共に、それぞれの地域の特徴を生かした挟み込み原料を開発し、新しいデザインを創り出しています。

Full Circle マークのパネルには、関わった様々な国の人々のストーリーがあります。



Human Connection

Full Circle is about making meaningful, one-on-one connections. We believe a worker's rights are human rights. Beyond product development, we identify specific needs where we can initiate improved living and working conditions for entire communities.



Meaningful Design

Artisans are the beginning and end of the products we make. Our Full Circle designs are directly inspired by the cultural, rural, and urban creative contexts and the rich material ecosystems of the places our artisans come from.

Sustainable Design

Path to Zero

Our sustainability initiatives are collectively known as Path to Zero and include several directives designed to minimize our environmental footprint. Our focus includes aggressive recycling, reduced waste, carbon neutrality, and material transparency.

サステイナブル デザイン

～ゼロへの道～

私たちの持続可能性への取り組みは、Path to Zero と呼ばれ、環境への影響を最小限に抑えるように設計されています。

私たちの焦点は、積極的なリサイクル、廃棄物の削減、カーボンニュートラル、そして使用材料の明確化です。



Material Transparency

With a growing focus on healthy buildings, we have been investing in creating Environmental Product Declarations (EPDs), and Health Product Declarations (HPDs), to offer an exceptional level of transparency and assurance to our customers.



Reduced Waste

Furthering 3form's successful zero-waste-to-landfill initiative, we are on a path to become a zero waste manufacturing facility. Our aggressive recycling, reduced waste creation, and innovative manufacturing support this goal.





Project Gallery

Seeing what our clients do with our materials makes it all worth it. The following pages are a small sample of some of the unique ways 3form[®] has been used around the world.

**St. Christopher's Hospital
for Children**

Brightly colored Varia circles
and pillar accents create a
feeling
of optimism in this Philadelphia
children's hospital.

Solution: Varia (various colors),
3form® Fabrication and Lighting
Location: Philadelphia, PA
Design: Ewing Cole
Photography: Halkin Mason Photography





Den Haag NIBC

A wall of backlit Varia combines modern with organic, creating a cool vibe for this corporate meeting space.

Solution: Varia Seaweed, 3form Fabrication

Location: Den Haag, Netherlands

Design: Bureau 070

Photography: Bram Vreugdenhil



Rice Energy

An undulating blue Edge wall feature welcomes guests inside this energy company's redesigned headquarters.

Solution: Edge Contour in Varia Glacier x2 Location: Canonsburg, PA
Design: NEXT Architecture
Photography: Denmark Photography



WJ Deutsch

A luminous Chroma bar feature and lightbox shelving creates an elegant space for gatherings.

Solution: Chroma Highres Alabaster
with Brown + Ghost, 3form® Fabrication,
Hardware, and Lighting
Location: Stamford, CT
Design: Amenta Emma
Photography: Robert Benson Photography



Microsoft

Suspended, colorful Varia sails are reminiscent of the iconic Microsoft “flying windows” screen savers.

Solution: Varia, 3form® Fabrication and Hardware

Location: San Francisco, CA

Design: Design Blitz

Photography: Bruce Damonte



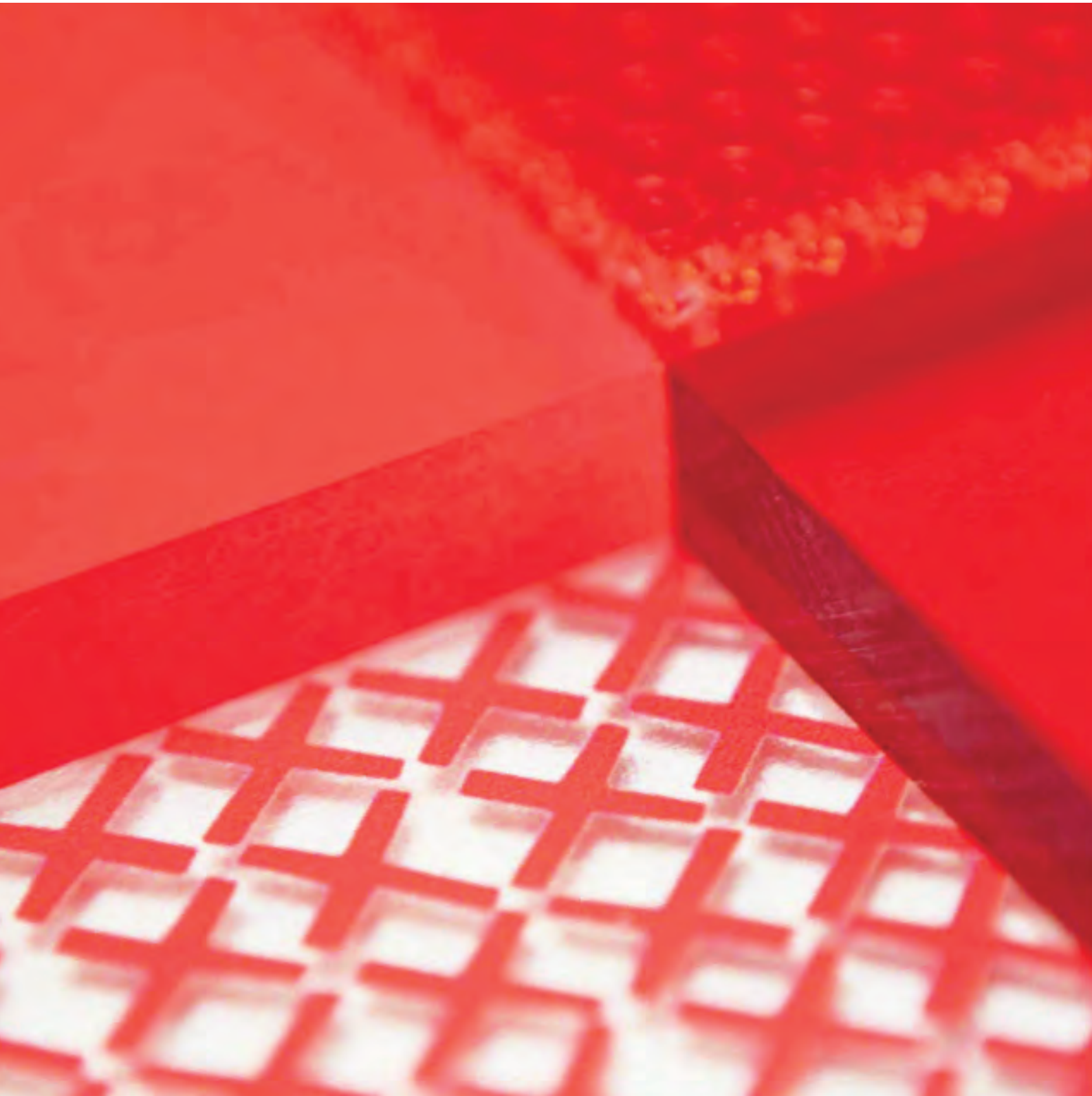
Blessing Hospital

The organic translucent partitions of Varia let light into this hospital with a nod to the wooded environment of the area.

Solution: Varia Birch, 3form Fabrication and Hardware
Location: Quincy, IL
Design: Christner Inc.
Photography: John Langholz

Materials

Our products range from translucent to opaque and from resins to resilient textiles. They answer the demand for adaptable, durable, sustainable, and modern materials in the market today.



Varia

A translucent, formable material made with 40% pre-consumer recycled content. Tailor your look by modifying color, texture, finish, pattern, and more. Varia is a go-to choice for walls, ceilings, partitions, and other design features.



ヴァリア PETG樹脂材

40%のリサイクルPET樹脂素材で作られた半透明で成形可能な素材です。豊富なデザイン、色、質感、そして優れた機能が特徴的です。

壁、天井、仕切り、引戸、その他の演出備品に最適です。

優れた機能性

- ・ 燃焼しにくく、自己消火性があり、燃焼しても二酸化炭素と水のみが発生で有毒ガスを発生しません。
- ・ ひび割れ粉碎に強く、カット、穴あけ、曲げ・三次元加工などが容易です。
- ・ 重量はガラスの約半分、衝撃強度は約40倍です。
- ・ 静電気を帯びにくく、耐薬品性にも優れています。

Options

Gauges

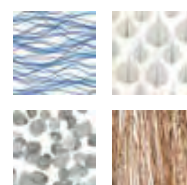
1.5mm, 3.1mm, 4.7mm,
6.3mm, 9.5mm, 12.7mm,
19mm, 25.4mm

Panel Sizes

1,200×2,400mm,
1,200×3,000mm

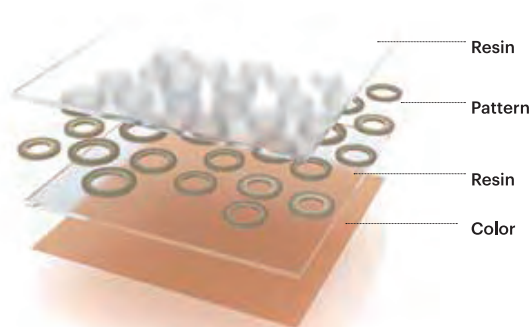


Available in 250 colors
See Color Portfolio



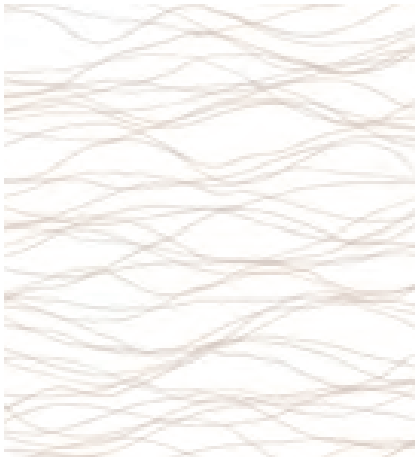
Available in over
200 patterns
See Patterns

Layers





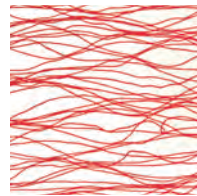
Artisan



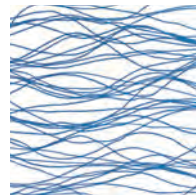
Current
Porcelain ‡



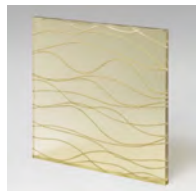
Current
Rope



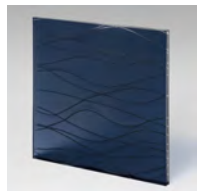
Current
Firework



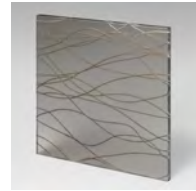
Current
Marine



Current
Sea mist



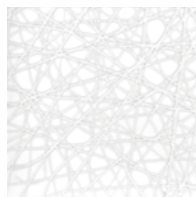
Current
Deep ocean



Current
Coastline



Connection Square
Pure FC



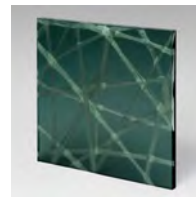
Connection Mini
Pure FC



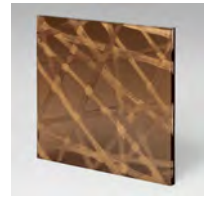
Connection
Pure FC



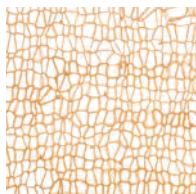
Connection
Mulberry FC



Connection
Iceberg FC



Connection
Jetty FC



Woven Raffia
FC



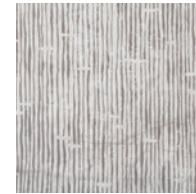
Woven Raffia
Steep FC



Woven Raffia
Bask FC



Woven Raffia
Crescent FC



Haiku



Fairy Tale



Woven Lokta
Pure FC



Woven Lokta
Orbit FC



Woven Lokta
Cinema FC



Tulsi Dusk
Pure FC



Tulsi Dusk
Cedarwood FC



Tulsi Dusk
Juniper FC



Tulsi
Pure FC



Tulsi
Amber FC



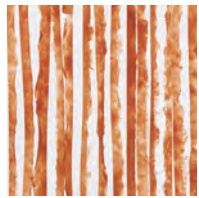
Tulsi
Pistachio FC



Tulsi
Obsidian FC



Fray Cinema FC



Fray Blaze FC



Fray Pearl FC



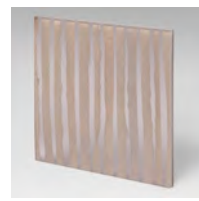
Fray Smoke FC



Fray Baltic FC



Fray Crescent FC



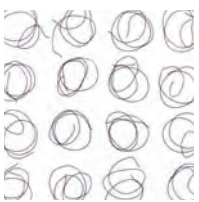
Fray Basalt FC



Paper Cut



Paper Lane



Pogo FC



Dance FC



Dance Chamomile FC



Dance Iced mint FC



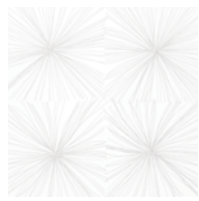
Dance Avenue FC



Pogo Graceland FC



Savu Coffee FC



Savu Jasmine FC



Savu Offshore FC



Pogo Adobe FC



Pogo Honeycomb FC



Savu Coastline FC



Savu Honeysuckle FC



Savu Adobe FC



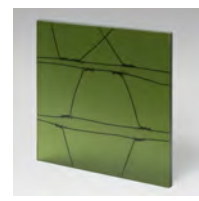
Savu Blood orange FC



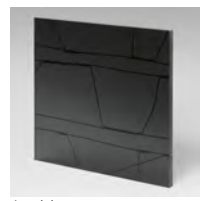
Ladder FC



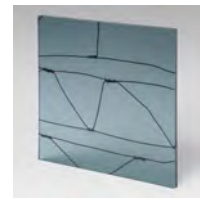
Ladder Amber FC



Ladder Juniper FC



Ladder Obsidian FC



Ladder Sage FC



Ladder Neptune FC

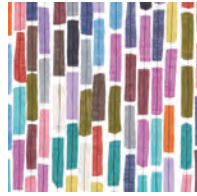


Ladder Adobe FC

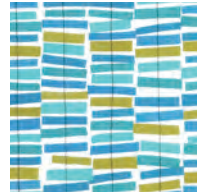
Artisan



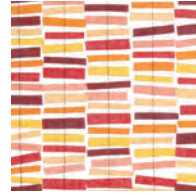
Ensign Gray FC



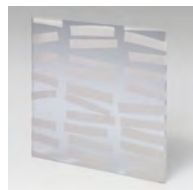
Ensign FC



Tribe Seagrass FC



Tribe Sunset FC



Tribe Pure FC



Tribe Natural FC



Struck Pure



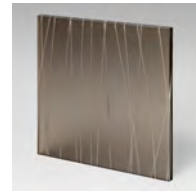
Struck Chamomile



Struck Polar sky



Slant Pure



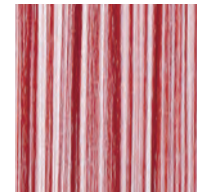
Slant Avenue



Strand White FC



Strand Iron FC



Strand Brick FC



Strand Lake FC

Mulberry



Capiz Random FC



Capiz Full Straight FC



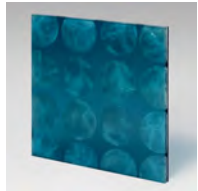
Capiz Natural Cream FC



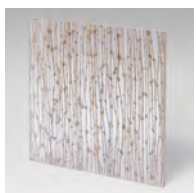
Capiz Avenue FC



Capiz Iced mint FC



Capiz Laguna FC



Knotted Hemp Wheaten



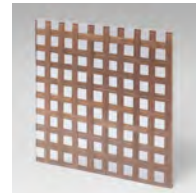
Knotted Hemp Ember



Knotted Hemp Snow



Woven Bamboo Open



Woven Bamboo Square



Organics



Kathali Browns *FC*

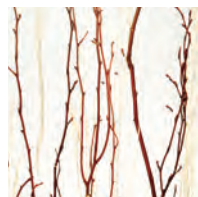


Tiger Thatch



Thatch

Kathali Grays *FC*



Trail



Birch



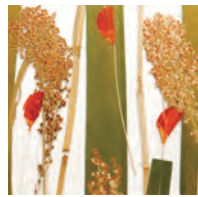
Whisper



Thatch 50 Percent



Amazon ‡



Highland



Antique Fleur



Antique Fleur Honeycomb



Antique Fleur Cedarwood



Antique Fleur Comet



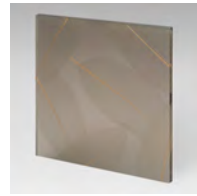
Fossil Leaf Random *FC*



Fossil Leaf Spade Random *FC*



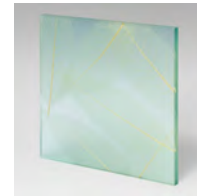
Fossil Leaf Spade Full Straight *FC*



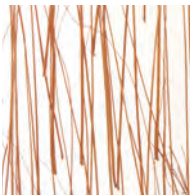
Fossil Leaf Coastline *FC*



Fossil Leaf Iceberg *FC*



Fossil Leaf Iced mint *FC*



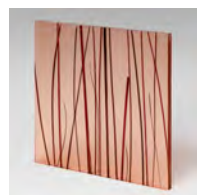
Ting Ting



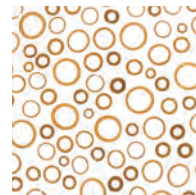
Ting Ting Avenue



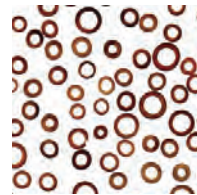
Ting Ting Polar sky



Ting Ting Sorbet



Bamboo Rings Natural *FC*



Bamboo Rings Dark *FC*



Star Flower



Anahaw Palm



Mountain Fern



Arrow Grass



Banksia



Wild Grass



Bear Grass Lite



Bear Grass Avenue



Bear Grass Laguna



Bear Grass



Thicket Gray



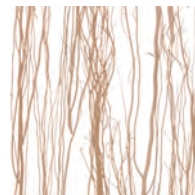
Seaweed



Rice Grass



Thicket Raven



Thicket Natural



Flek Pureは3formの技術によって再生された100%リサイクルのデザインパネルです。Colorsは92%リサイクルです。



Flek Pure



Flek Chamomile



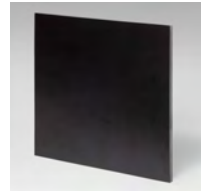
Flek Charge



Flek Crater



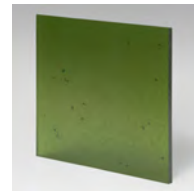
Flek Avenue



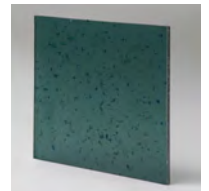
Flek Shale



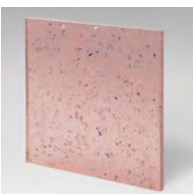
Flek Pistachio



Flek Juniper



Flek Iceberg



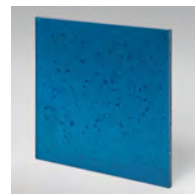
Flek Frosty pink



Flek Polar sky



Flek Iced mint



Flek Arctic blue





Textiles: Deconstructed and Redefined

Textiles bring beauty and warmth to our world, whether in fashion or interior design. Structured yet flexible, knitted fabrics form unique patterns and colors with a rich textural feel.

Now, we take wovens in an entirely new direction, deconstructing the material to reveal the true nature of the weave. From the non-traditional tears of Snag to the layers of Cleo, this collection spans a wide range of looks for any space. Encapsulating our handsome textiles will forever preserve the delicate appeal of woven fibers within high-performance Varia or Glass

Shown in Vera Umbra



Textiles Bright & Refined

Open white spaces invite rich expressions of pattern and texture. A modernist mood prevails, with streaming light and tactile surfaces. From our collection of whites choose expressive graphics or delicately overlapping patterns that will fill your space with sophisticated touches.

Shown in Villa Prose



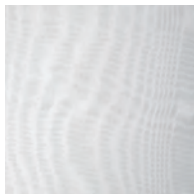
From unrestrained, distressed knits to refined layering, our curated collection of Textiles is a beautiful span of textural translucency. Each interlayer is designed and then laid up by hand in our factory to create the finished product in Varia.



Linea
Azure



Linea
Ivory



Aero Plus



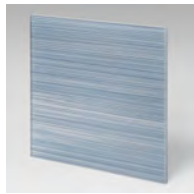
Evo
White



Spider



Horizon
Tempest



Horizon
Day



Horizon
Beam



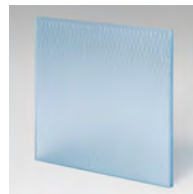
Scribble Cloud
Blood orange



Scribble Cloud
Kona



Scribble Cloud
Laguna



Scribble Cloud
Polar sky

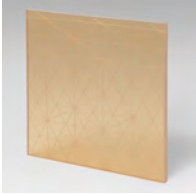


Scribble Cloud
Sorbet

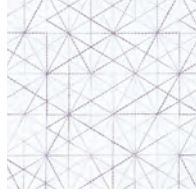


Scribble Cloud

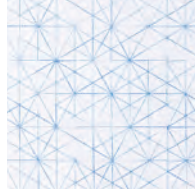
Textiles



Starcrossed
Honeycomb



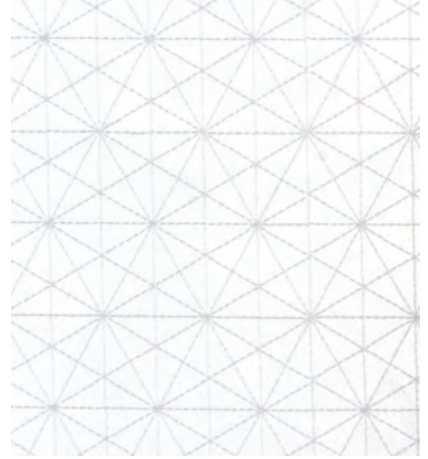
Starcrossed
Shadow



Starcrossed
Dream



Starcrossed
Golden



Starcrossed
White



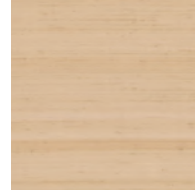
Starcrossed
Lavish



Starcrossed
Rhubarb



Silken
Bridal



Silken
Oyster



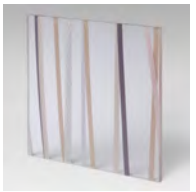
Hush
Gesso 2



Hush
Natural



Hush
Cinder



Luster
Pure



Luster
Orbit



Luster
Prose



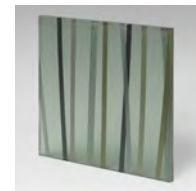
Luster
Crescent



Luster
Umbra



Luster
Juniper



Luster
Pistachio



Luster
Laguna

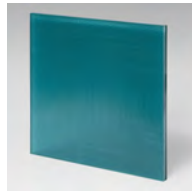
The spectrum of colors in Veil, Vera, Villa, Vita and Color Weave range from bold and bright to subtle and neutral. Now we present our largest group of Price Group A textiles for your next project.



Villa
Pure



Villa
Prose



Villa
Equinox



Villa
Cinema



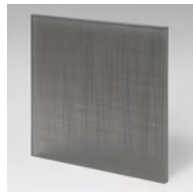
Villa
Crystalline



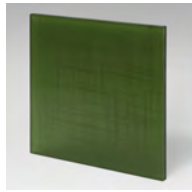
Villa
Steep



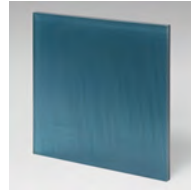
Villa
Amber



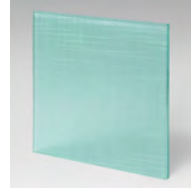
Villa
Crater



Villa
Juniper



Villa
Laguna



Villa
Aura



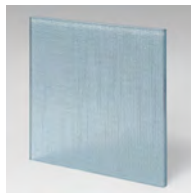
Vita
Pure



Vita
Prose



Vita
Basalt



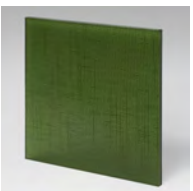
Vita
Orbit



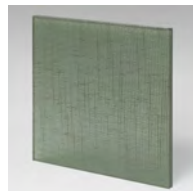
Vita
Bask



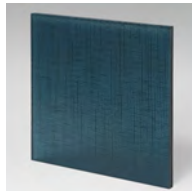
Vita
Cinema



Vita
Juniper



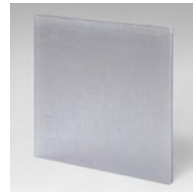
Vita
Pistachio



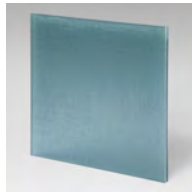
Vita
Laguna



Veil
Pure



Veil
Crater



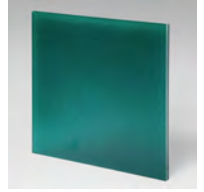
Veil
Sage



Veil
Naptune



Veil
Pistachio



Veil
Pine



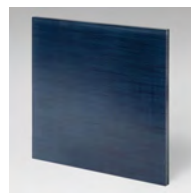
Vera
Pure



Vera
Umbra



Vera
Steep

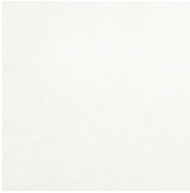


Vera
Deep ocean

Textiles



Color Weave
Pure White



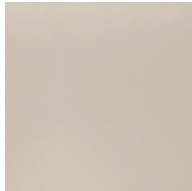
Color Weave
White



Color Weave
Fog



Color Weave
Slate



Color Weave
Gull



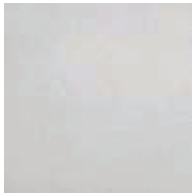
Color Weave
Aluminum



Color Weave
Black



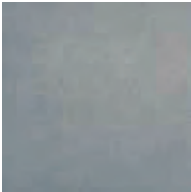
Color Weave
Electric Blue 2



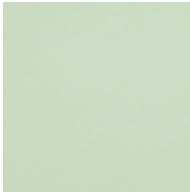
Color Weave
Sky



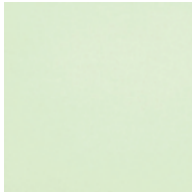
Color Weave
Ocean Mist



Color Weave
Pacific



Color Weave
Aqua



Color Weave
Mint



Color Weave
Celery



Color Weave
Parchment



Color Weave
Sand



Color Weave
Taupe



Color Weave
Mocha



Color Weave
Pure Red



Shown in Flare Silver Lioness



Metallics

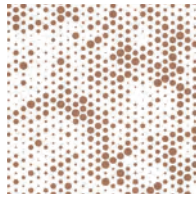
Alchemy Revealed

Few dare to work with naturally rusted materials that are heavy and unfriendly to the touch. Yet rust has an enduring appeal when alchemy reveals its organic character. Our variations, Forge and Oxide, offer two very different looks drawn from real rusted steel. Forge highlights the weathering of the metal when distressed beyond rusting, with distinctive dark streaks and intense marbling. Oxide is a smoother expression with mottled reddish-brown hues and soft patterning. Each variation and panel is unique and will make a lasting impression in any space.

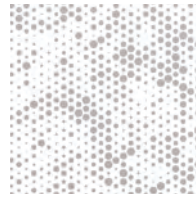
Metallics Fuse

Digital dot patterns are arrayed across high-resolution metallic screen prints and encapsulated in Varia, forming shifting cloud patterns. Lustrous and translucent, Fuse creates a contemporary, yet edgy look that brings a refined sophistication to any space.





Fuse
Copper



Fuse
Silver



Fuse
Gold



Our curated offer of innovative metallic interlayers includes rust, delicate foils, and screen prints. Each interlayer is designed and then laid up by hand in our factory to create the finished product in Varia.



Flare
Brass Lions



Flare
Copper Saddle

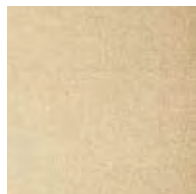


Flare
Silver Thunder

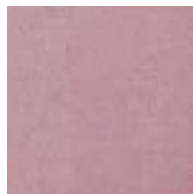
※Flareは表面にリサイクル金属フレークを埋め込んだ製品です。



Pure
Silver



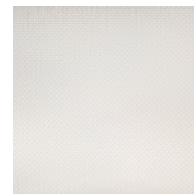
Pure
Gold



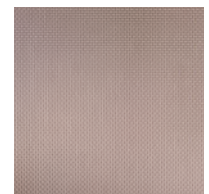
Pure
Rose Gold



Pure
Copper



Quattro
Platinum 2



Quattro
Carbon 2



Swept
Rose Gold



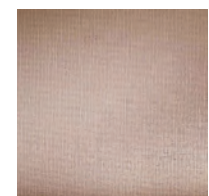
Swept
Gold



Swept
Copper

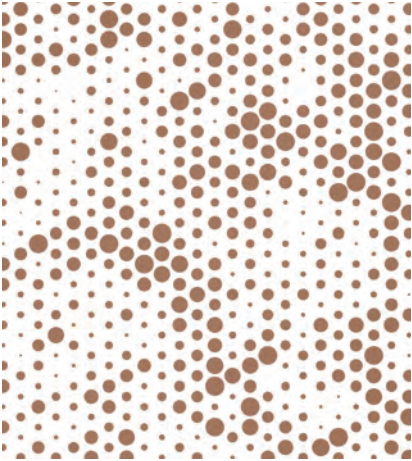


Swept
Silver



Bronze Weave

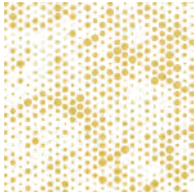
Metallics



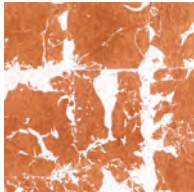
Fuse
Copper



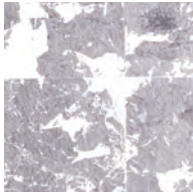
Fuse
Silver



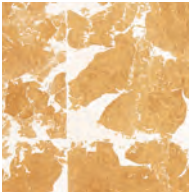
Fuse
Gold



Gild
Copper *FC*



Gild
Silver *FC*



Gild
Gold *FC*



Glint
Copper *FC*



Glint
Silver *FC*



Glint
Gold *FC*

Textures

Linear

Lengthening textures evoke a sense of horizontal and vertical movement.



Ridge



Vertu V Mini



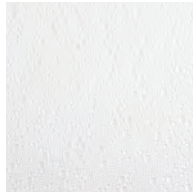
Vertu V Mondo



Wave

Organic

Inspired by textures in the world around us, this collection ranges from bold to subtle.



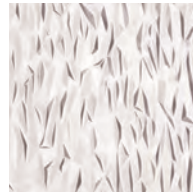
Pop



Tonic

Geometric

Striking lines and bold shapes create textural dynamic energy.



Fractal



Swim



Wrinkle

Hint

These textures present a subtle impression. All Hint patterns are available single or double-sided. Pattern density increases when Hint is added to both sides of your material.



Hint Meadow



Hint Straightup



Hint Rule



Hint Flow

Architectural glass

Inspired by styles like reeded glass and the classic art-deco era's curves and shapes, our Textures Collection is made of our Varia material, making it easy to fabricate shapes and add color to fit your design.



Bravo



Capitol



Deco



Ozner



Rohe



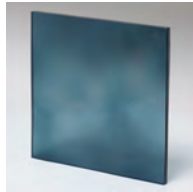
Walker

Dual-Sided Textures

Explore our Dual-Sided Textures, featuring new, three-dimensional textures on both surfaces of our 100% recycled resin, putting you on the right side of design, every time.



Monterey
Pure



Monterey
Palladian



Monterey
Skylight



Sierra
Pure



Sierra
Curry



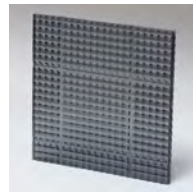
Sierra
Drizzle



Soho
Pure



Soho
Nectar



Soho
Smudge



Valencia
Pure



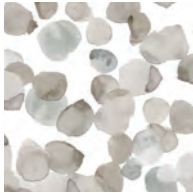
Valencia
Espresso



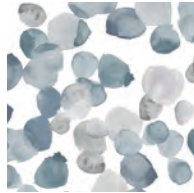
Valencia
Teak

* 250色以上のカラーを追加可能です。

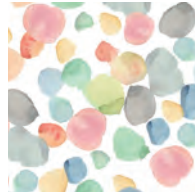
Painterly



Go Go
Burnish



Go Go
Hudson



Go Go
Jest



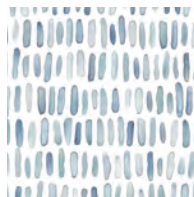
Go Go
Castaway



Go Go
Canyon



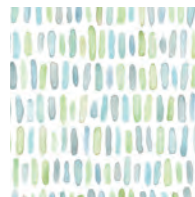
Queue
Burnish



Queue
Hudson



Queue
Jest



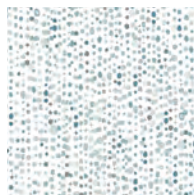
Queue
Castaway



Queue
Canyon



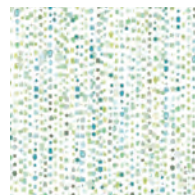
Speckle
Burnish



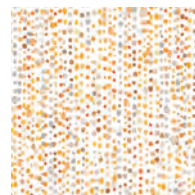
Speckle
Hudson



Speckle
Jest



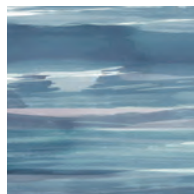
Speckle
Castaway



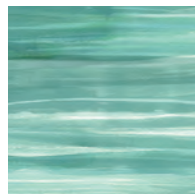
Speckle
Canyon



Brushstroke
Burnish



Brushstroke
Hudson



Brushstroke
Jest



Brushstroke
Castaway



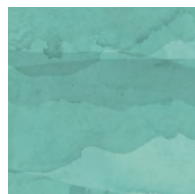
Brushstroke
Canyon



Waterstroke
Burnish



Waterstroke
Hudson



Waterstroke
Jest



Waterstroke
Castaway



Waterstroke
Canyon



Wood

Wood

Any of these seven species of HighRes Woods can be paired with the Wood+ patterns.



Rosewood



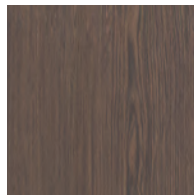
Gray Oak



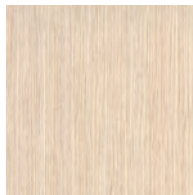
Walnut



Cherry



Wenge



White Oak



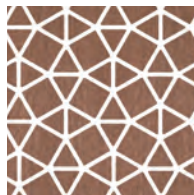
Zebrano



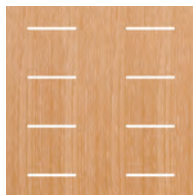
Black Ash

Wood+

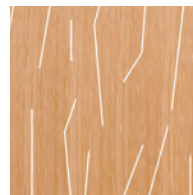
These single-layer patterns can be specified in any of the seven species of HighRes Woods.



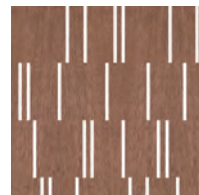
Ace



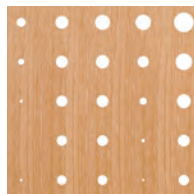
Array



Burrow



Dash



Halftone



Flicker



Flora



Midtown



Om



Sequence



Vade

Graphic Patterns



Heartwood Sap



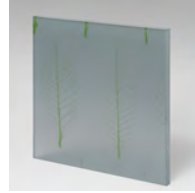
Heartwood Bark



Heartwood Rings



Serotina Golden



Serotina Mountain



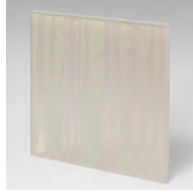
Serotina Wild



Aspen Grove



Aspen Popple



Aspen Rustle



Web Bolt



Web Nexus



Strum Gemini



Strum Jet



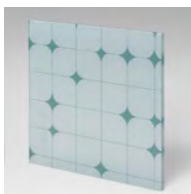
Strum Flip



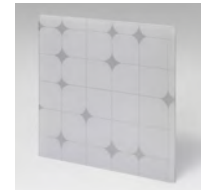
Web Spoke



Web Delta



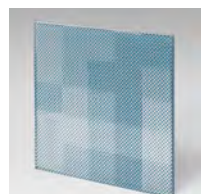
Cloy Gamma



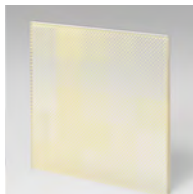
Cloy Mystic



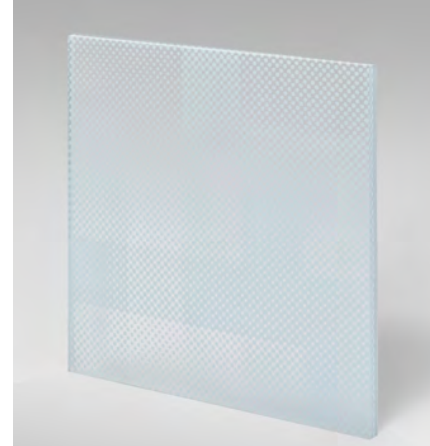
Cloy Chi



Boxed Milo



Boxed Candela



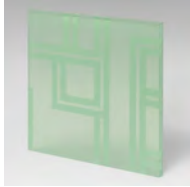
Boxed Cubic



Herbarium



Shown in Herbarium



Jakar



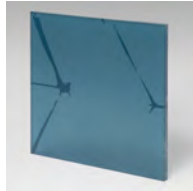
Kente



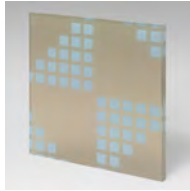
Kuba



Ochre



Shibori



Yakan



Shown in Kente



Chroma

A luminous, durable, and renewable material which is available in the full Color Portfolio with a wide array of finishes. Chroma is best suited for transaction desks, countertops, and lit applications.



Options

Gauges

12.7mm, 25.4mm, 50.8mm

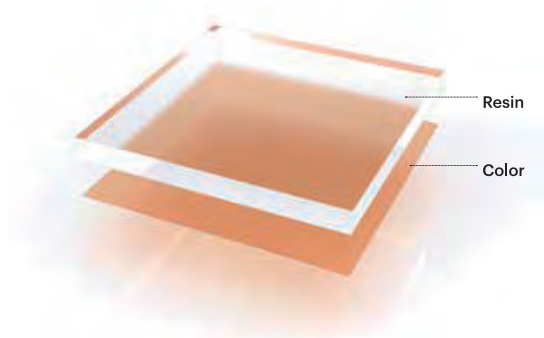
Panel Sizes

1,200×2,400mm,
1,200×3,000mm



Available in 250 colors
See Color Portfolio

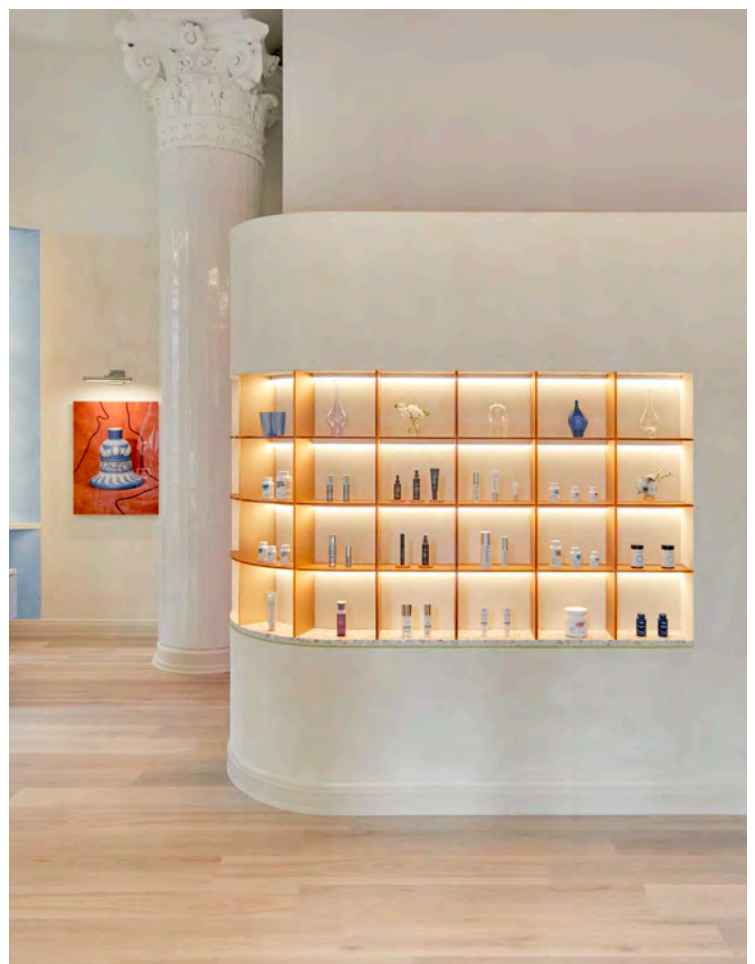
Layers



クロマ アクリル樹脂材

色彩豊かで耐久性があり、そして再生可能な材料です。250色のカラーシートと豊富な表面加工により、従来のアクリルとは異なる演出が可能です。

展示什器、カウンタートップ、および照明付きの家具に最適です。



Chroma Flare

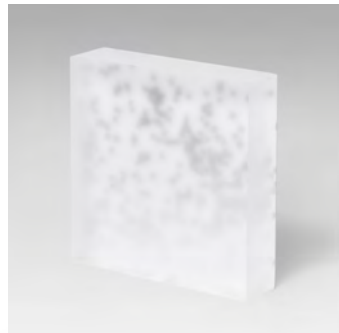
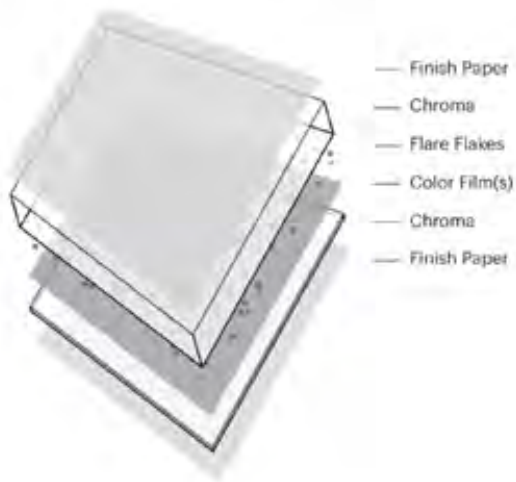
Chromaに光を透過しないカラーシートBlackout（黒）と Avalanche（白）をベースにキャストアクリルの内側にリサイクル金属フレークを施した製品です。

Options

Gauges
12.7mm, 25.4mm

Panel Sizes
1,200×2,400mm, 1,200×3,000mm

Layers



Silver Avalanche



Copper Blackout



Shown in Chroma Copper Blackout



Shown in Chroma Silver Avalanche

Color Portfolio

250 colors. One system.

We offer the most comprehensive assortment of translucent colors for design applications. These hues can be used across any of our materials: Varia, Chroma.



250 Colours. One system.

We offer a comprehensive assortment of translucent colours for design applications. These hues can be used with Varia and Chroma materials.











Whites, Diffusions, Effects and Finishes

From translucent to opaque.
From subtle to bold. For lit
applications or to add a dash
of color, we offer a range
of layering and finish options
to complement and enhance
your design.

Whites, Diffusions and Effects

This curated collection of whites, diffusions, and effects spans the gamut from opaque to translucent and can be incorporated with pattern options and the 3form® Color Portfolio.

Effects

A variety of effects, each designed to create a unique look either on their own or in combination with the colors of the 3form Color Portfolio.



Titanium

E02 ✪



Black Out

E03



Ivory

E04

✪ Available for exterior applications

Whites

An array of whites with varying levels of opacity, designed for use on their own or in combination with the colors of the 3form Color Portfolio to increase saturation and opacity.



White Out 5% W01 ☼



Down 15% W02 ☼



Ghost 30% W03 ☼



Flurry 50% W04



Vapor 65% W05

Diffusions

A selection of lightdiffusing whites with varying levels of translucency, designed for backlit or daylight situations. Powder is the diffusion recommended for all interior backlit applications. Ghost is recommended for all exterior backlit applications.



Avalanche 1% D01 ☼



Paperwhite 20% D02



Powder 45% D03



Polar 50% D04

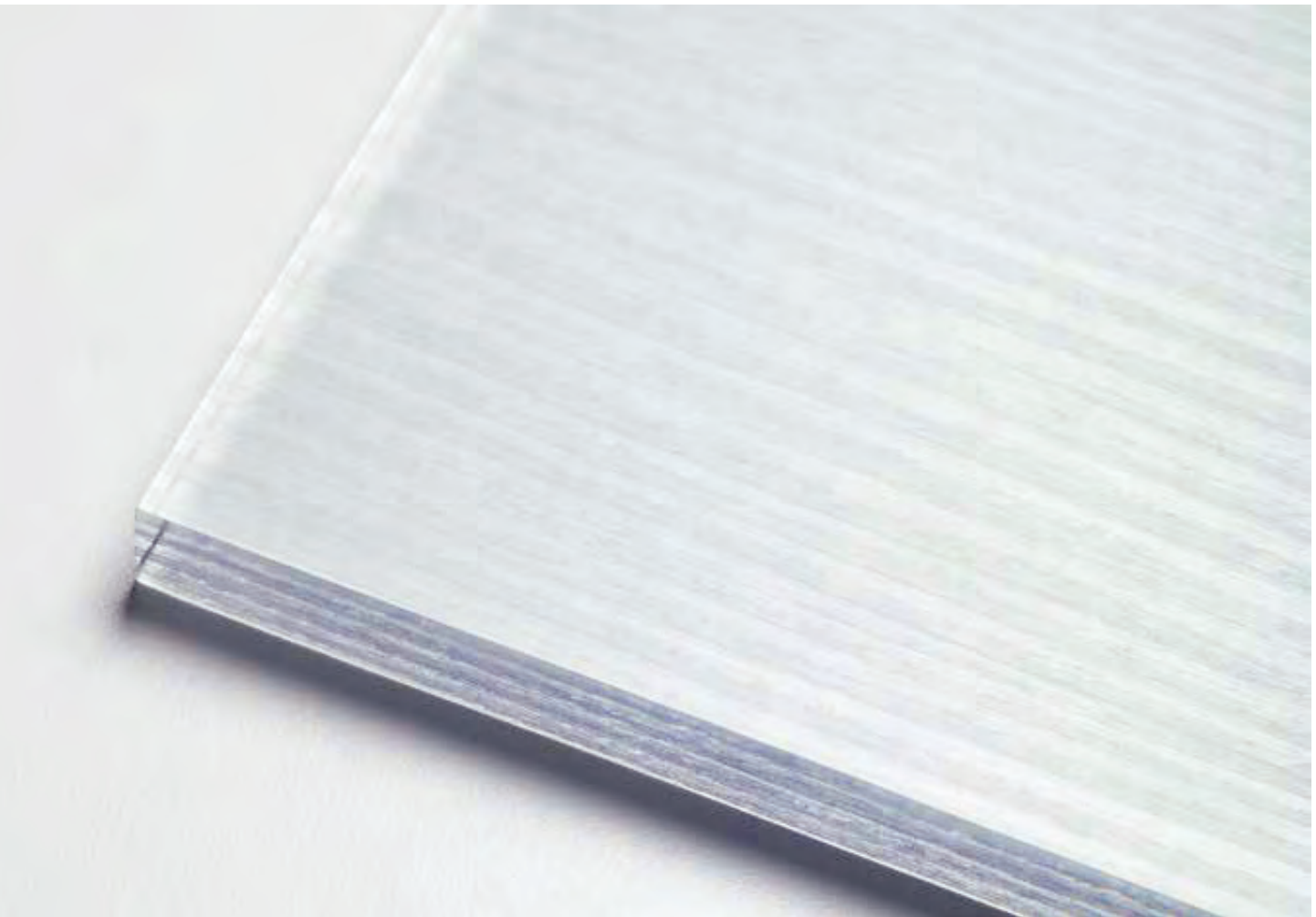


Glacier 70% D05

Numerical percentages represent an approximation of relative light transmission values. Final opacity for all materials is dependent upon the combination of gauge, finish, and material choice. Adding color may impact minimum gauge requirements.

Finishes

A collection of finishes designed to enhance the appearance and performance of 3form® materials. In most cases finishes will be applied to the front and back surfaces of a material.





Sandstone F01
Varia, Chroma, Struttura, Koda XT
This durable finish offers a subtle diffusion effect and is the most in demand for *Varia* and *Struttura*.



Patina F02
Varia, Chroma, Struttura, Koda XT
A non-glare finish with smooth appearance.



Patent F03
Varia, Chroma, Struttura, Koda XT
A high gloss finish with highest light transmittance.



Vellum F04
Varia, Chroma, Struttura, Koda XT
A brushed matte finish that adds a subtle texture to our materials, and our standard finish in *Chroma*.



Supermatte F05
Varia, Struttura
A frosted matte finish that assists in light diffusion.



Stucco F06
Varia, Chroma, Struttura, Koda XT
A durable finish with pebbled texture.



Velvet F07
Varia, Chroma, Struttura
Durable blurred finish with a crushed velvet appearance.



Grain F08
Varia, Chroma, Struttura
Refined organic detail in a translucent wood grain finish.



Grid F09
Varia, Chroma, Struttura
Fine, horizontal crosshatched lines create a subtle texture.

製品規格

製品	組成 (重量比)	厚み(公差)	パネルサイズ	重さkg/m ²	標準表面仕上げ	屋外使用	曲げ加工					
Varia	PETG (100%) 再生材使用率40%	1.5mm (1.27~1.78)	1,200 × 2,400 1,200 × 3,000	2.2	Sandstone Patina Vellum Supermatte Stucco Velvet Grain Grid	不可	※別途要確認					
		3.1mm (2.49~3.51)	1,200 × 2,400 1,200 × 3,000	4.1								
		4.7mm (3.94~5.21)	1,200 × 2,400 1,200 × 3,000	6.8								
		6.3mm (4.98~7.77)	1,200 × 2,400 1,200 × 3,000	8.1								
		9.5mm (7.72~11.02)	1,200 × 2,400 1,200 × 3,000	13.5								
		12.7mm (10.46~14.27)	1,200 × 2,400 1,200 × 3,000	16.2								
		19mm (15.7~20.27)	1,200 × 2,400 1,200 × 3,000	25.6								
		25.4mm (21.59~27.69)	1,200 × 2,400 1,200 × 3,000	33.6								
		Chroma	アクリル (100%) 再生材使用率30%	12.7mm (11.4~14.9)				1,200 × 2,400 1,200 × 3,000	15.1	Vellum	可能 (XTタイプ)	可能
				25.4mm (22.9~27.9)				1,200 × 2,400 1,200 × 3,000	30.2			
50.8mm (45.7~55.9)	1,200 × 2,400			60.5								

●価格・納期は製品によって異なり、全て受注生産品となるため、直接弊社にお問い合わせください。

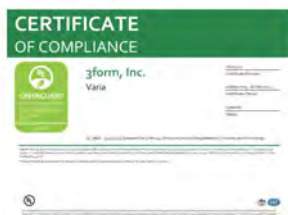
●他種樹脂パネル製品同様、温度の変化により、わずかにたわみや伸縮をおこすことがあります。枠に納める構造にご使用になる場合は多少の余裕を考慮ください。

●パネルの厚みは、中に自然素材などを挟み込む製品の特性上、公差があります。

※挟み込み素材によって曲げにくいものがございます。担当へご確認ください。

◆サステナビリティについて

- ・ GREENGUARD Gold認証 (世界で最も厳しいVOC放散基準)
- ・ Declare Red List Freeラベル (有害物質非含有証明)
- ・ EPD 環境製品宣言 (製品ライフサイクルに関する国際環境基準)
- ・ LEED認証・WELL認証、その他のグリーンビルディング規格 適合



GREENGUARD Gold認証



Declareラベル



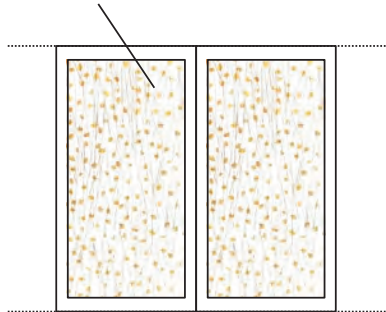
環境製品宣言

★スペック方法

スペックの際は下記赤線のように製品名 (Varia、Chroma) ・デザイン ・厚みを記載の上、製品をご指定ください。

《スライドドアにVaria(製品名)、Gingko Thatch(デザイン)、6.3mm(厚み)をご指定の場合》

3form Varia “Gingko Thatch” t=6.3



★3form製品についての注意

- 製品の仕様は改良のため、予告なく変更することがありますのでご了承ください。
- 製品の色は印刷の特性上、現品と異なる場合がありますのでご了承ください。
- 挟み込み素材の形、色、風合いはロットにより若干異なる場合があります。また経年により色の変化が現れる場合があります。
- 他種樹脂パネル製品同様、温度の変化により、わずかにたわみや伸縮をおこすことがあります。枠に納める構造にご使用になる場合は多少の余裕を考慮ください。
- パネルの厚みは、中に自然素材などを挟み込む製品の特性上、公差があります。
- 製品の保証期間（製造上の材質や仕上がりに欠陥がないこと）は出荷日より1年間となります。
- 水まわりにご使用になる場合は、エッジをシーリングする必要があります。
- 膨張 / 収縮** 長手方向(mm) × 温度変化℃ × 0.000072 = 熱膨張/収缩量(mm)
例: +10℃の温度変化における1,200mm × 2,400mm のパネルの膨張 『2,400 × 10 × 0.000072 = 1.72mm』

※お手入れ方法

シートをぬるま湯ですすぎ、柔らかい布やスポンジと低刺激性洗剤でほこりや汚れを取り除き、ぬるま湯で十分に洗い流してください。
水気を拭く際は、柔らかい湿った布をご使用ください。乾いた布でこすると素材を傷つけ、静電気を起こす恐れがあります。
スクレーパーなどの用具、研磨剤やガソリン、ベンゼン、アセトン、シンナーなどの有機溶剤や石油類はご使用にならないでください。

★加工について

- 3form製品（Glassシリーズは除く）は、木材や金属加工に使用される、丸のこ、バンドソー、サーベルソーで切断可能です。
- 工具のスピードは、製品が摩擦熱によって溶けない程度にしてください。
- 面取り、小口磨き、穴あけ、小口接着、留め継ぎ加工が可能です。

◎安全にご使用いただくために

- ・製品を加工する時には、よく手入れされた装置をご使用ください。
- ・製品加工時には保護メガネ、防塵マスクを着用して下さい。

3form

www.3-form.com

FLACE

エース物産株式会社
フレイスインテリアディビジョン
〒102-0074
東京都千代田区九段南2-2-1 エース九段ビル1F
TEL:03-6550-9212 FAX:03-6550-9213
www.flacedesign.com