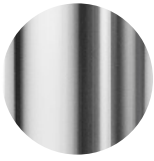


# RANGE S 60

Glen Oliver Löw

## FRAME



chrome-plated

## GLIDERS

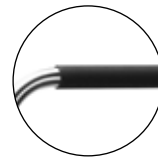


felt gliders  
black or trans-  
parent

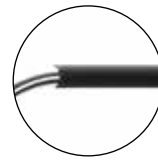


POM plastic  
gliders black or  
transparent

## ARMRESTS



napa leather



elastomeric black

## PLYWOOD



clear varnished  
oak



brightened  
oak



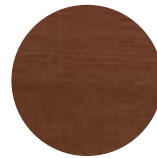
stained oak  
black  
TP 29



clear varnished  
beech I



stained beech I  
brightened  
TP 107



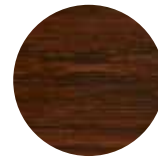
stained beech I  
walnut  
TP 24



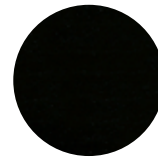
stained beech I  
cherry tree  
TP 44



stained beech I  
mahogany  
TP 34



stained beech I  
dark brown  
TP 89



stained beech I  
black  
TP 29



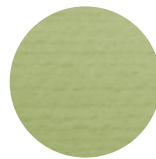
stained beech II  
dark blue  
TP 259



stained beech II  
powder blue  
TP 257



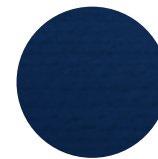
stained beech II  
azure blue  
TP 250



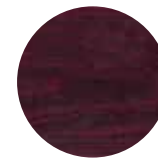
stained beech II  
reed green  
TP 262



stained beech II  
grey green  
TP 269



stained beech II  
blue black  
TP 295



stained beech II  
black red  
as RAL 3007



stained beech II  
black grey  
as RAL 7021



stained beech II  
lemon yellow  
as RAL 1012



stained beech II  
olive green  
as RAL 6003



stained beech II  
coral red  
TP 233



stained beech II  
rust red  
TP 239

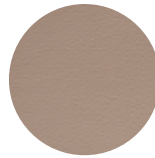


stained beech II  
glazed white  
TP 200

## LEATHER I



latte  
635



tortora  
659



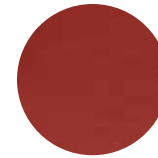
castagna  
612



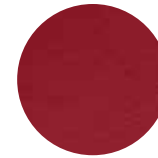
new cognac  
680



muscat  
681



mattone  
613



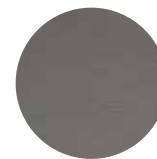
rosso antico  
657



mascara  
640



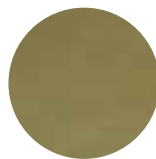
ming  
703



highway  
670



nero  
622



green  
631

The 12 colours shown here are  
part of the Thonet collection  
LEDER I group.

# FABRICS

We procure our high-quality furniture fabrics from renowned manufacturers. All collection fabrics are suitable for contract furniture and have an abrasion value (according to Martindale) no lower than 25,000. The fabric groups vary in material and price.

The fabrics shown are only a selection of colours from the collection. The printed colours approximate the colours of the materials and fabrics. Slight colour differences from the original are possible. We reserve the right to make modifications or changes. You can find the technical properties of the shown materials on the websites of our manufacturers.

The individual groups comprise the following:

W.P.	White upholstery (upholstery covered with cotton batting, without a cover)
Fabric I	Rivet, Step, Step Melange
Fabric II	Field 2, Main Line Flax, Remix 3, Revive 1, ThonetMed®
Fabric III	Credo, Mood, Novum, Soul, ThonetTec®
Fabric IV	Divina Melange 3, Hallingdal 65, Safire, Steelcut Trio 3
Leather II	Maharam

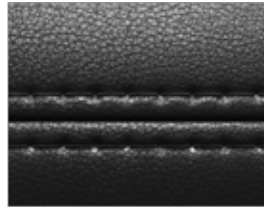
## SEAMS/PIPING FOR FULLY UPHOLSTERED MODELS S 32/S 64



black synthetic piping



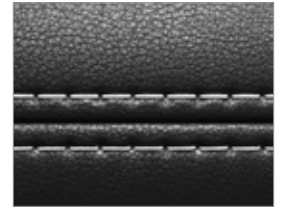
flat felled seam



double lockstitch seam



Pure Materials, nubuck leather:  
flat felled seam in contrasting  
colour

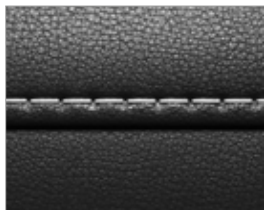


Pure Materials, natural nappa  
leather: double lockstitch seam  
in contrasting colour

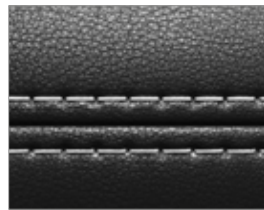
## SEAMS/PIPING FOR MODELS S 411 AND S 411 H



with piping completely  
wrapped with cover material



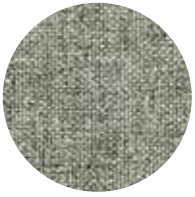
Pure Materials, nubuck leather:  
flat felled seam in contrasting  
colour



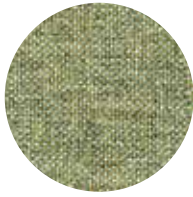
Pure Materials, natural nappa  
leather: double lockstitch seam  
in contrasting colour

# FABRICS

## RIVET (CAMIRA, FABRIC I)



EGL01 Vitreous



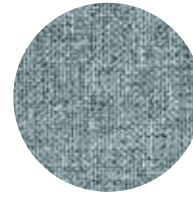
EGL11 Burnish



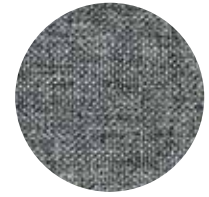
EGL12 Forge



EGL14 Copper



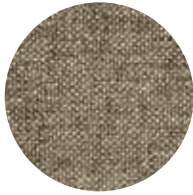
EGL16 Prime



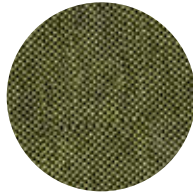
EGL18 Solder



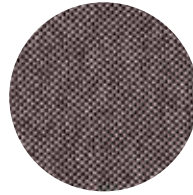
EGL20 Tensile



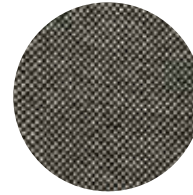
EGL25 Cast



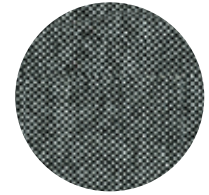
EGL31 Olive



EGL33 Woodrose

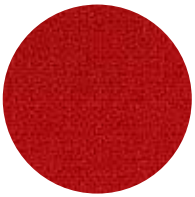


EGL49 Twig



EGL50 Grey Brindle

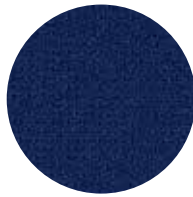
## STEP (GABRIEL, FABRIC I)



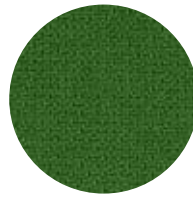
63012



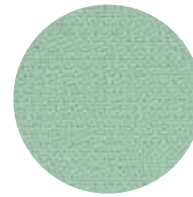
65047



65018



68120



68118



60999



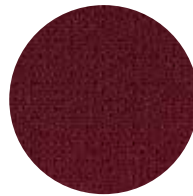
60004



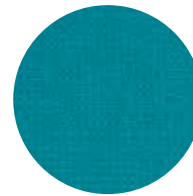
62057



68165



64159

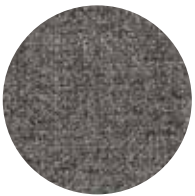


67073



62073

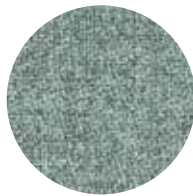
## STEP MELANGE (GABRIEL, FABRIC I)



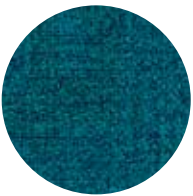
61149



60004



68118



67007



68158



63075



64179



62057



68119



# FABRICS

## FIELD 2 (KVADRAT, FABRIC II)



233



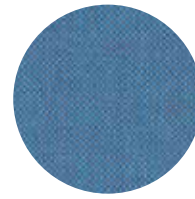
242



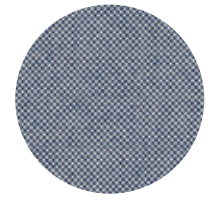
182



773



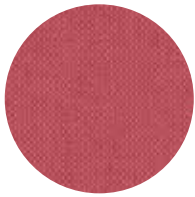
733



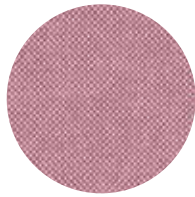
723



663



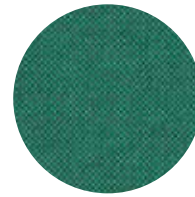
643



623



943

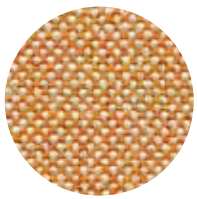


963

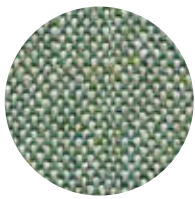


192

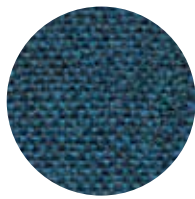
## MAIN LINE FLAX (CAMIRA, FABRIC II)



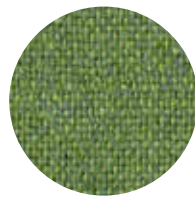
08 Lambeth



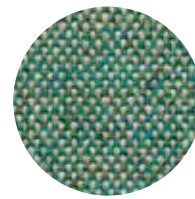
09 Monument



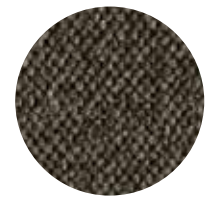
35 Brompton



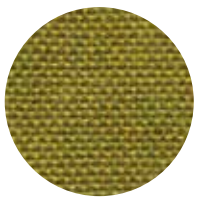
18 Tufnell



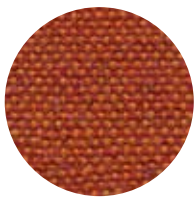
24 Bayswater



16 Temple



31 Goldhawk



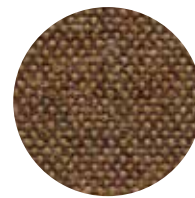
13 Leyton



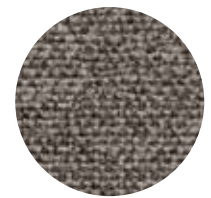
14 Parsons



23 Bank



15 Stockwell



26 Camden

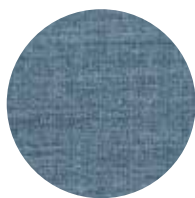
## REMIX 3 (KVADRAT, FABRIC II)



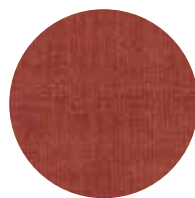
0123



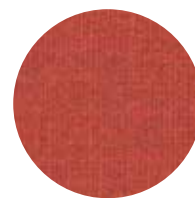
0173



0733



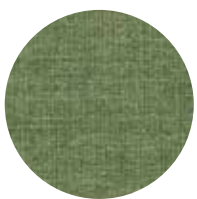
0632



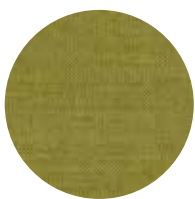
0653



0612



0933



0912



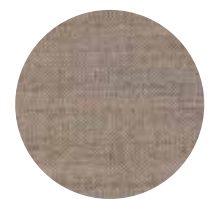
0923



0113



0223

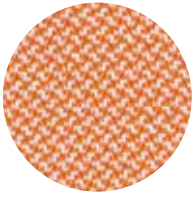


0242

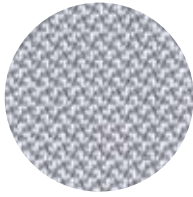


# FABRICS

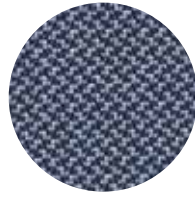
## REVIVE 1 (KVADRAT, FABRIC II)



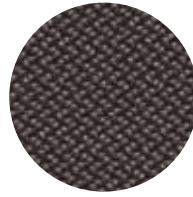
534 deep orange – white



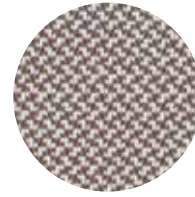
144 pastel blue – white



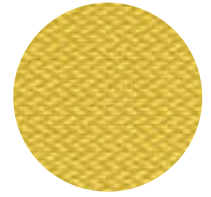
764 pastel blue – bluish black



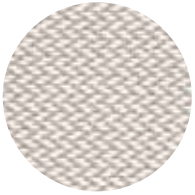
274 biscuit – taupe



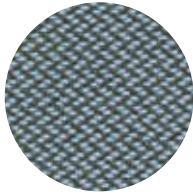
324 biscuit – white



424 bright yellow – ochre yellow



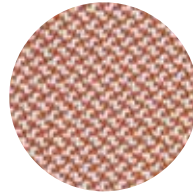
224 white – light grey



944 pastel blue – olive green



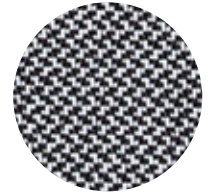
454 pastel yellow – graphite grey



414 pastel yellow – pearl white



194 black



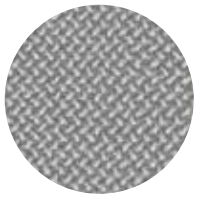
154 black – pearl white



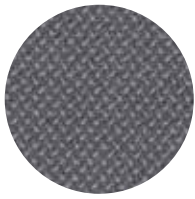


# FABRICS

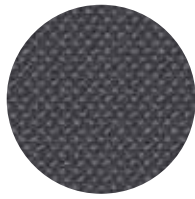
## CREDO (ROHI, FABRIC III)



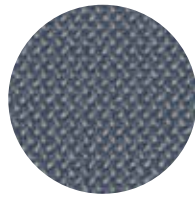
zinn



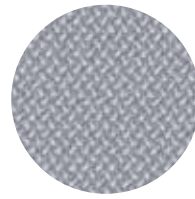
taupe



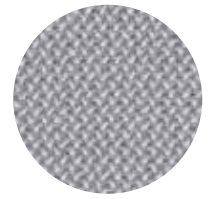
schiefer



sea



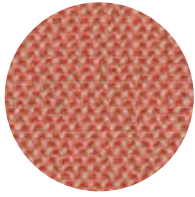
diamond



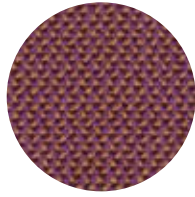
chalk



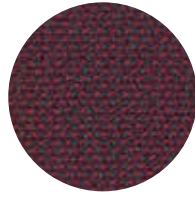
aureo



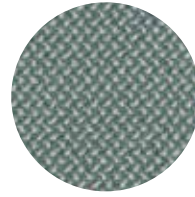
grapefruit



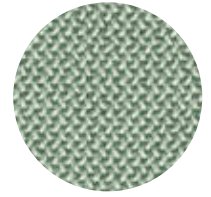
brevia



rubin



lake



aloe

## MOOD (GABRIEL, FABRIC III)



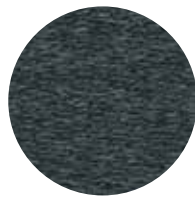
5105



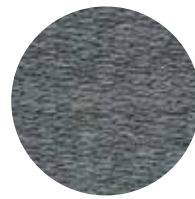
4103



3104



2107



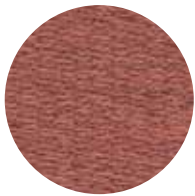
4105



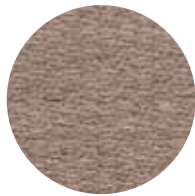
2105



8101



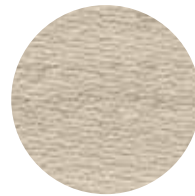
3105



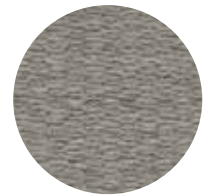
1103



2102

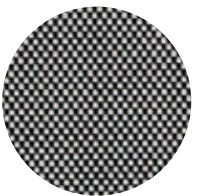


1104

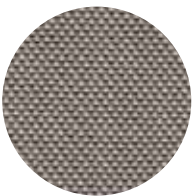


3101

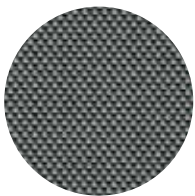
## NOVUM (ROHI, FABRIC III)



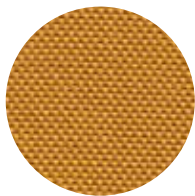
01 Pepper



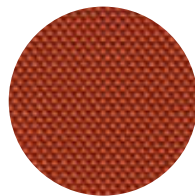
07 Stone



08 Prime



15 Curry



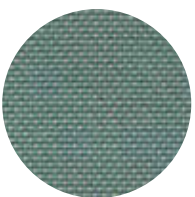
18 Coral



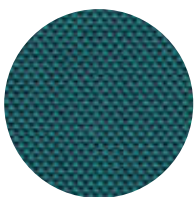
23 Viola



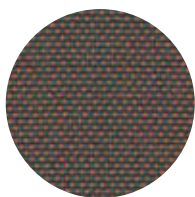
26 Lord



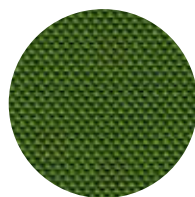
30 Lagoon



31 Prisma



33 Mambo



38 Moss



40 Pear

# FABRICS

## SOUL (ROHI, FABRIC III)



angora



anthrazit



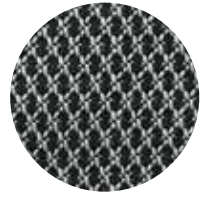
black



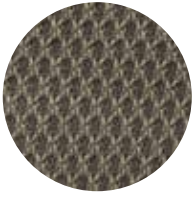
cocos



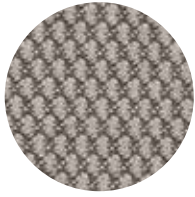
graphit



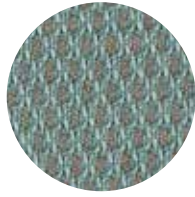
pepper



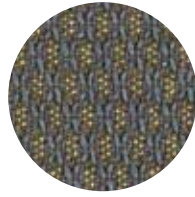
stone



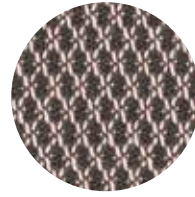
island



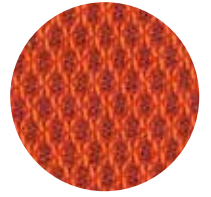
under



urban



air



tropic





# FABRICS

## DIVINA MELANGE 2 (KVADRAT, FABRIC IV)



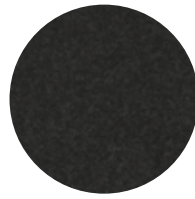
0120



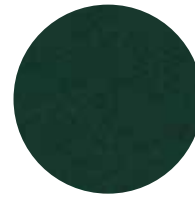
0147



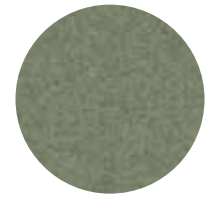
0277



0180



0967



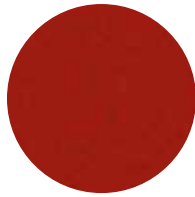
0917



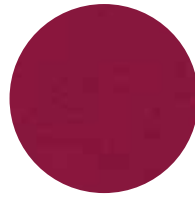
0427



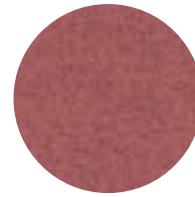
0547



0557



0620



0617

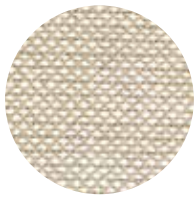


0227

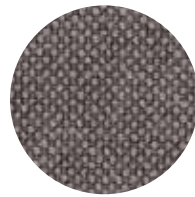
## HALLINGDAL 65 (KVADRAT, FABRIC IV)



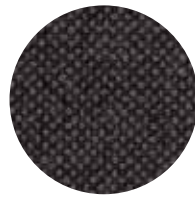
457 Yellow



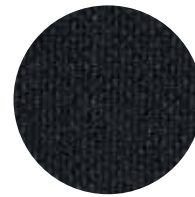
200 Beige



153 Grey



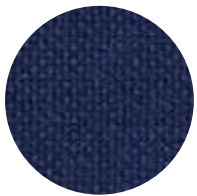
173 Black grey



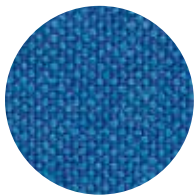
190 Black



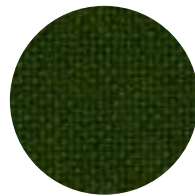
370 Brown



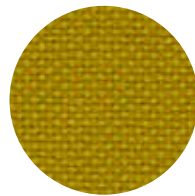
764 Dark blue



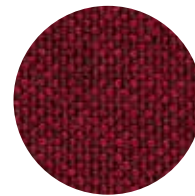
733 Blue



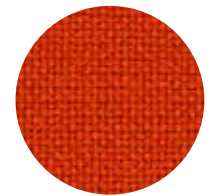
960 Green



420 Yellow orange



687 Bordeaux

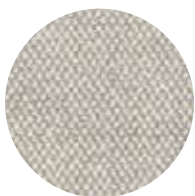


600 Orange

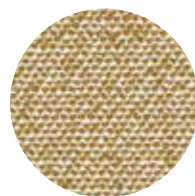
## SAFIRE (SAHCO, FABRIC IV)



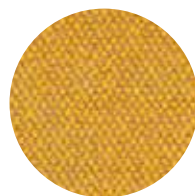
007



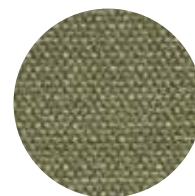
008



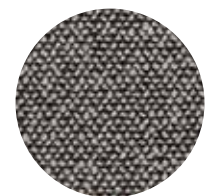
016



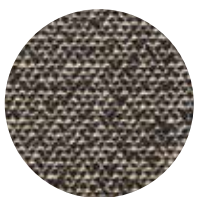
017



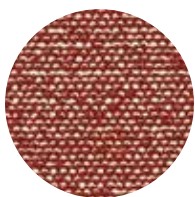
005



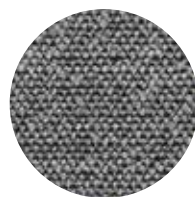
003



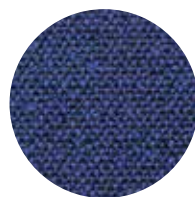
001



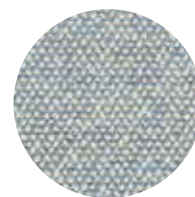
013



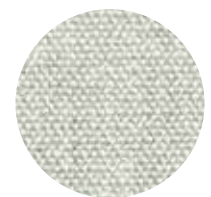
009



011



012



006

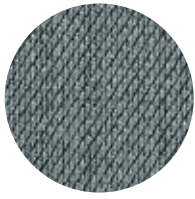


# FABRICS

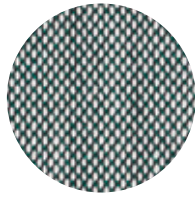
## STEELCUT TRIO 3 (KVADRAT, FABRIC IV)



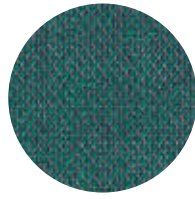
0113



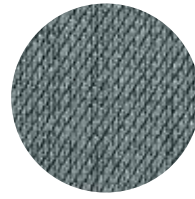
0153



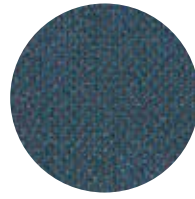
0916



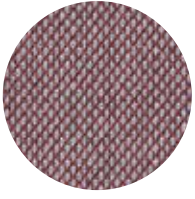
0996



0153



0756



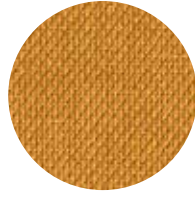
0276



0645



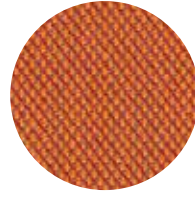
0453



0466



0476

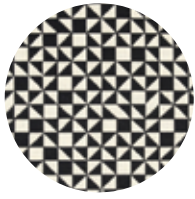


0576

## MAHARAM (LEATHER II)



Double Triangles



Checker Split



Facets



# THONET MED®

The synthetic leather ThonetMed® skai® Parotega NF can barely be distinguished from real leather due to its natural look and feel. The colour range comprises 40 shades. The high-quality, low maintenance and robust synthetic leather complies with the B1 building material class for the highest requirements for non-combustibility and is ideally suited for public institutions, nursing homes, senior's homes and hospitals, fitness studios and physical therapy facilities. skai® Parotega NF is resistant to disinfectant, blood and urine.

Material: 85 % polyvinyl, 15 % cotton backing material  
Abrasion resistance: 75.000 Martindale

Flammability rating: DIN 4102-1 (Part 1, B1); DIN EN13507-1B; s3,d0; DIN 66084 P-α; NF M1, AM 18; BS5852 IS-0+1+5; DIN EN1021-1+2; DIN 4102-1(B2); FMVSS 302, FAR25.853; ÖNORM B3825 highly flame-retardant (B1); ÖNORM3800-1 Q1; UNI 9175/87 (1.IM)

**The fabrics shown are only a selection of colours from the collection. The printed colours approximate the colours of the materials and fabrics. Slight colour deviations from the original are possible. We reserve the right to make modifications or changes. You can find the technical properties of the shown materials on the websites of our manufacturers.**

## THONET MED (FABRIC II)



F6461666



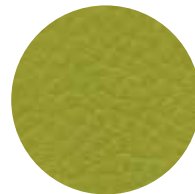
F6461654



F6461702



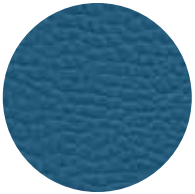
F6461706



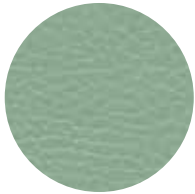
F6461657



F6461705



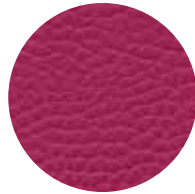
F6461709



F6461767



F6461768



F6461735



F6461736



F6461664





# THONET TEC®

The PVC-free synthetic leather ThonetTec® skai® Pureto EN is especially soft and warm to the touch, which is reminiscent of calfskin. A palette with 12 subtle colours is available. Due to its excellent technical properties and low maintenance, it is perfectly suited for the trend-oriented office, hotel and gastronomy segments. The vegan synthetic leather is made of a highly robust water-based polyurethane material, does not contain solvents and is therefore an excellent choice for environmentally conscious users.

Material: 60 % polyurethane coating, 40% cotton/polyester backing material

Abrasion resistance: 100,000 Martindale

Flammability rating: EN 1021-1-2; FMVSS 302

**The printed colours approximate the colours of the materials and fabrics. Slight colour differences from the original are possible. We reserve the right to make modifications or changes. You can find the technical properties of the shown materials on the websites of our manufacturers.**

## THONET TEC (FABRIC III)



F7610008



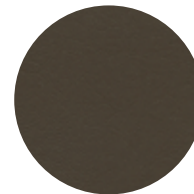
F7610009



F7610010



F7610011



F7610012



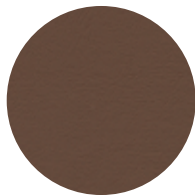
F7610020



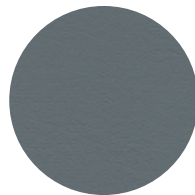
F7610014



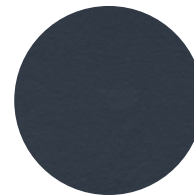
F7610015



F7610016



F7610017



F7610018



F7610019

