

CHROMA

3form

CHROMA

TRANSLUCENT SURFACE

Chroma is a luminous, durable, and renewable material for endless applications. Available in our full color portfolio and an array of fabrication and lighting services, Chroma is ideal for surfaces and lit applications.





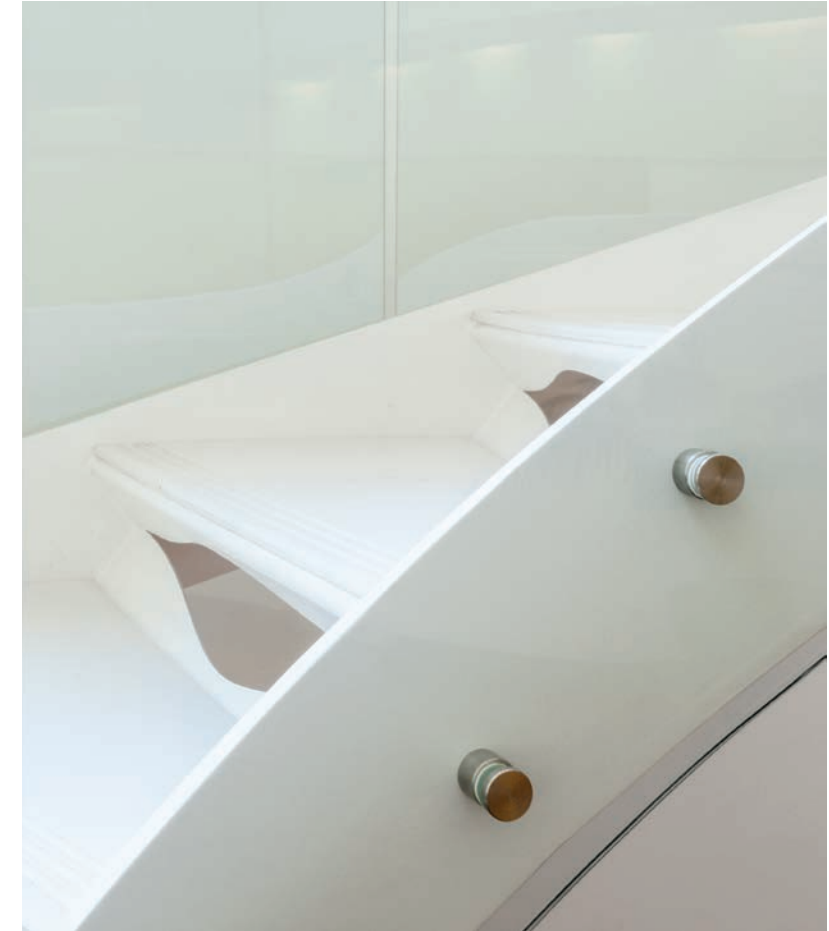
PERIMETER MALL

| ARCHITECTURE DESIGN COLLABORATIVE

Location
Atlanta, GA, USA



Powder D03



ALALUF OFFICES

| ARCHITECTURE GT2P

Location
Santiago, Chile

Ghost W03



MONTEREY PENINSULA COLLEGE

| HGA

Location
Monterey, CA, USA

Chroma XT,
Clear



Cranberry R17



SKENDER

| PERKINS + WILL, CHICAGO

Location
Chicago, IL, USA



PERK PARK

| THOMAS BALSLEY ASSOCIATES

Location
Cleveland, OH, USA

Chroma XT,
Rouge R28



Cranberry R17

FIR TREE PARTNERS

| KOSTOW GREENWOOD ARCHITECTS LLP

Location
Miami, FL, USA

CHELSEA STRATUS

| THOMAS BALSLEY ASSOCIATES

Location
New York, NY, USA

Chroma XT,
Daredevil R26



SACRED HEART UNIVERSITY

SPAGNOLO GISNESS &
ASSOCIATES, INC.

Location
Fairfield, CT, USA



Chroma XT,
Radish R24



NICKELODEON HEADQUARTERS

| STUDIOS ARCHITECTURE SAN FRANCISCO

Location
Burbank, CA, USA

Acre G27,
Bewitched V13,
Matisse B24,
Punch O21,
Vapor W05,
Galvanize N57



IRVING CONVENTION CENTER

| RMJM HILLIER

Location
Irving, TX, USA



White Out W01



COLORADO BUILDING

| THE STUDIO ARCHITECTURE

Location
Boulder, CO, USA

HighRes +
Ghost W03



KENT PLACE

| LITA DIRKS

Location
Cherry Hills, CO, USA

HighRes Alabaster +
Ghost W03



**UNIVERSITY OF TENNESSEE
JOHN C. HODGES LIBRARY**

| MCCARTY HOLSAPLE MCCARTY

Location
Knoxville, TN, USA

Marigold Y21 +
Mai Tai O20 +
Ghost W03



Chroma XT,
Daisy Y19



BANNER IRONWOOD HOSPITAL

| SMITHGROUP / PHOENIX

Location
San Tan Valley, AZ, USA



101 NORTH TRYON
| WAGNER MURRAY ARCHITECTS

Location
Charlotte, NC, USA

Moss G33,
Vitamin C Y11,
Cayman B15





BRITISH PETROLEUM

| CARLSON WEST POVONDRA ARCHITECTS

Location
Omaha, NE, USA

White Out W01

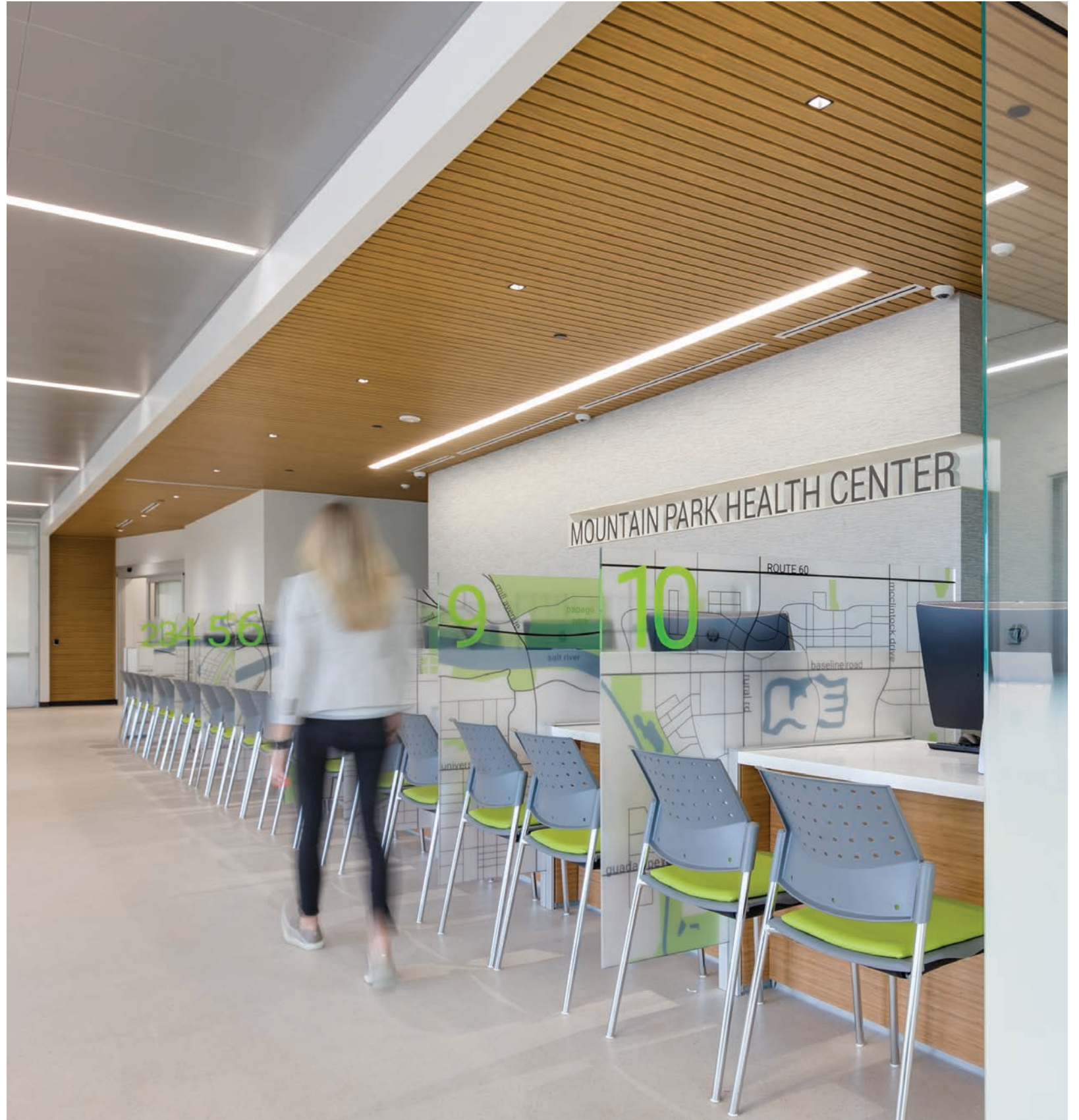
MOUNTAIN PARK HEALTH CENTER

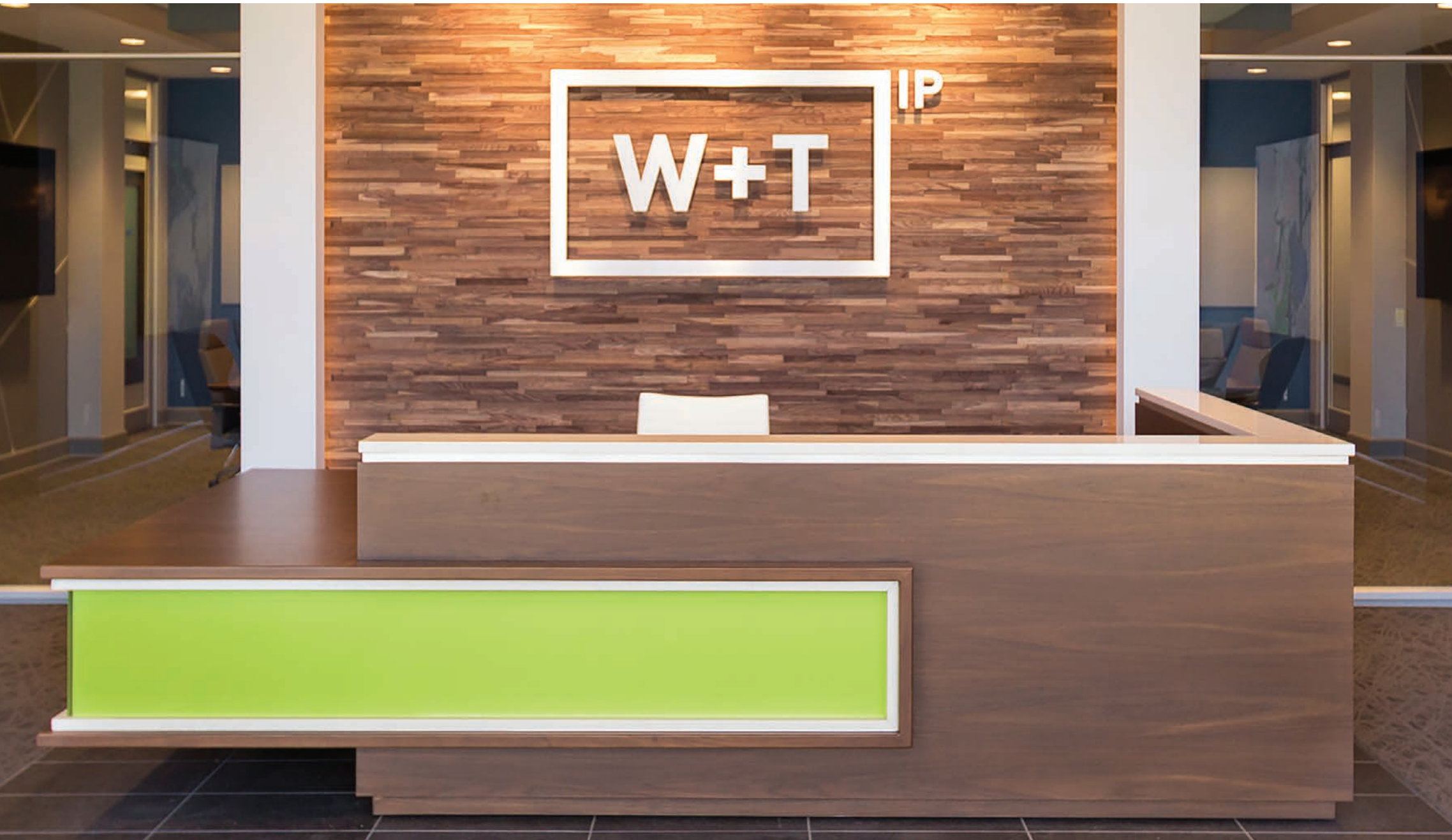
| SMITHGROUPJJR

Location
Tempe, AZ, USA



HighRes





WITHROW & TERRANOVA PLLC

| CLINE DESIGN ASSOCIATES

Location
Cary, NC, USA

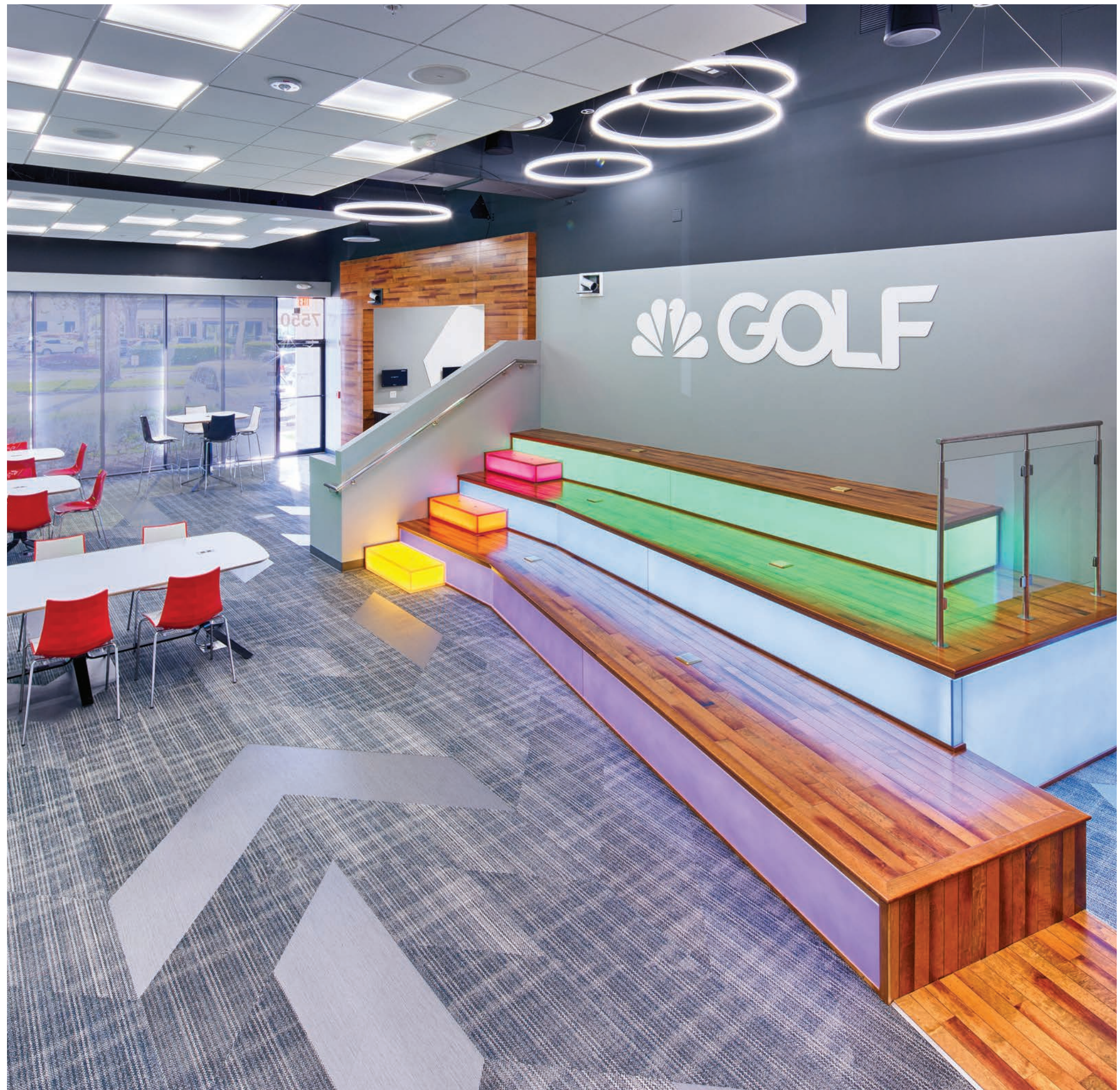
Moss G33 +
White Out W01

GOLF CHANNEL

| WALKER DESIGN

Location
Orlando, FL, USA

Shamrock G47,
Pier B45,
Taffy V25,
Persimmon O12,
Lavender V06,
Sunnyside Y17,
Powder D03





GOOGLE
| RAPT STUDIO

Location
Irvine, CA, USA

Ghost W03

CANAL PARK

| STUDIOS ARCHITECTURE

Location
Washington, DC, USA



Chroma XT,
Ghost W03



816 CONGRESS

| STUDIO DWG

Location
Austin, TX, USA



Chroma XT,
Ghost W03



White Out W01

HUMAN CARE
| SUSAN STRAUSS DESIGN

Location
Brooklyn, NY, USA

JAMES R. HERMAN CRUISE TERMINAL AT PIER 27

| PFAU LONG/KMD PARTNERSHIP

Location
San Francisco, CA, USA



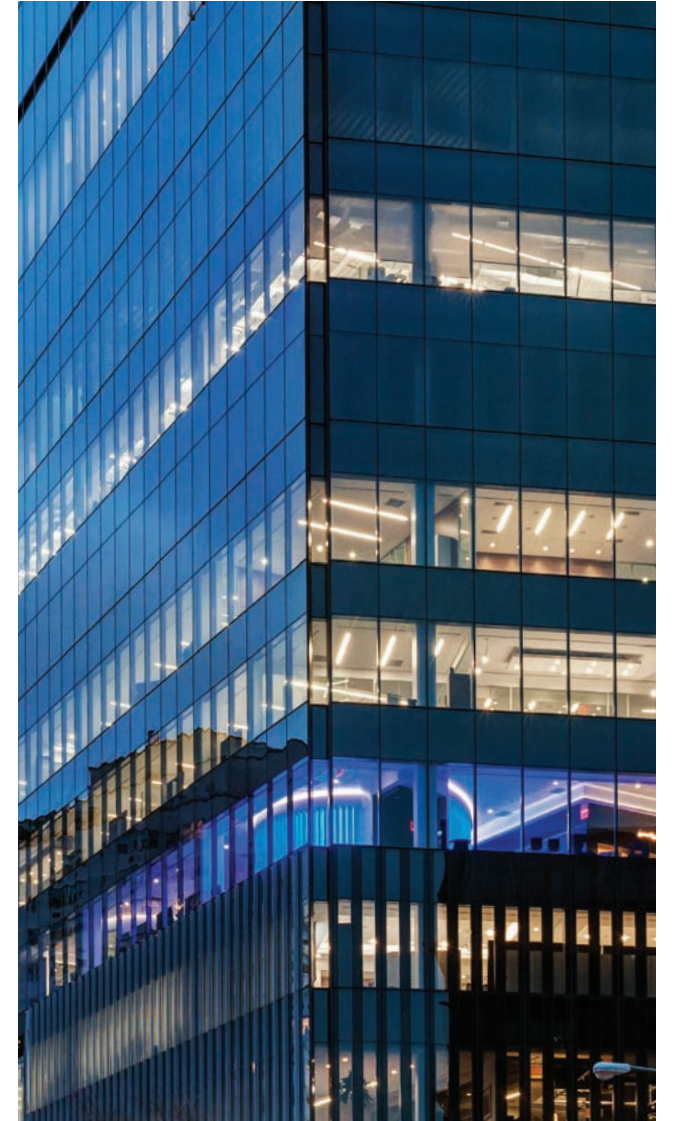
Cobalt B25 +
White Out W01



IBM WATSON

| SWITZER GROUP

Location
New York City, NY, USA



Clear +
RGB Lighting



ART GALLERY OF ALBERTA

RANDALL STOUT ARCHITECTS

Location
Edmonton, AB, CAN

Ghost W03





GULCH CROSSING

| ESA

Location
Nashville, TN, USA

Chroma XT,
Ghost W03

DOC MAGIC

| RA-DA

Location
Los Angeles, CA, USA

Ghost W03



COLOR PORTFOLIO

The 3form Color Portfolio offers the most comprehensive assortment of translucent colors for design applications. Each can be combined with our whites, diffusions, patterns, and effects to create a distinct look.



* Available for exterior applications.



At 3form® we believe in Smart Design for a Better World. Our approach promotes craftsmanship, community, sustainability, and respect for the environments where we work and live.

© 2018 3form, LLC © 2018 3form, BV

The following marks depicted herein are registered trademarks of 3form, LLC: 3form, Chroma, Chroma XT. All other words, names, symbols, devices, or combinations thereof used herein that identify and distinguish 3form goods and services constitutes a trademark or trade dress of 3form, LLC.

This booklet, the panels, samples, colors, and layouts shown herein are 3form intellectual property, and may be the subject of one or more U.S. or international patents or patents pending. Please see 3-form.com/IP for more information.

North America EMEA
800.726.0126 +31 (0)88 33 67600

3-form.com



Please recycle this catalog.



